

# TECHNOLOGY REPORT

**Marshall Electronics, Inc.**

1910 East Maple Av, El Segundo, CA 90245 USA

TEL : 310-333-0606

FAX : 310-333-0688

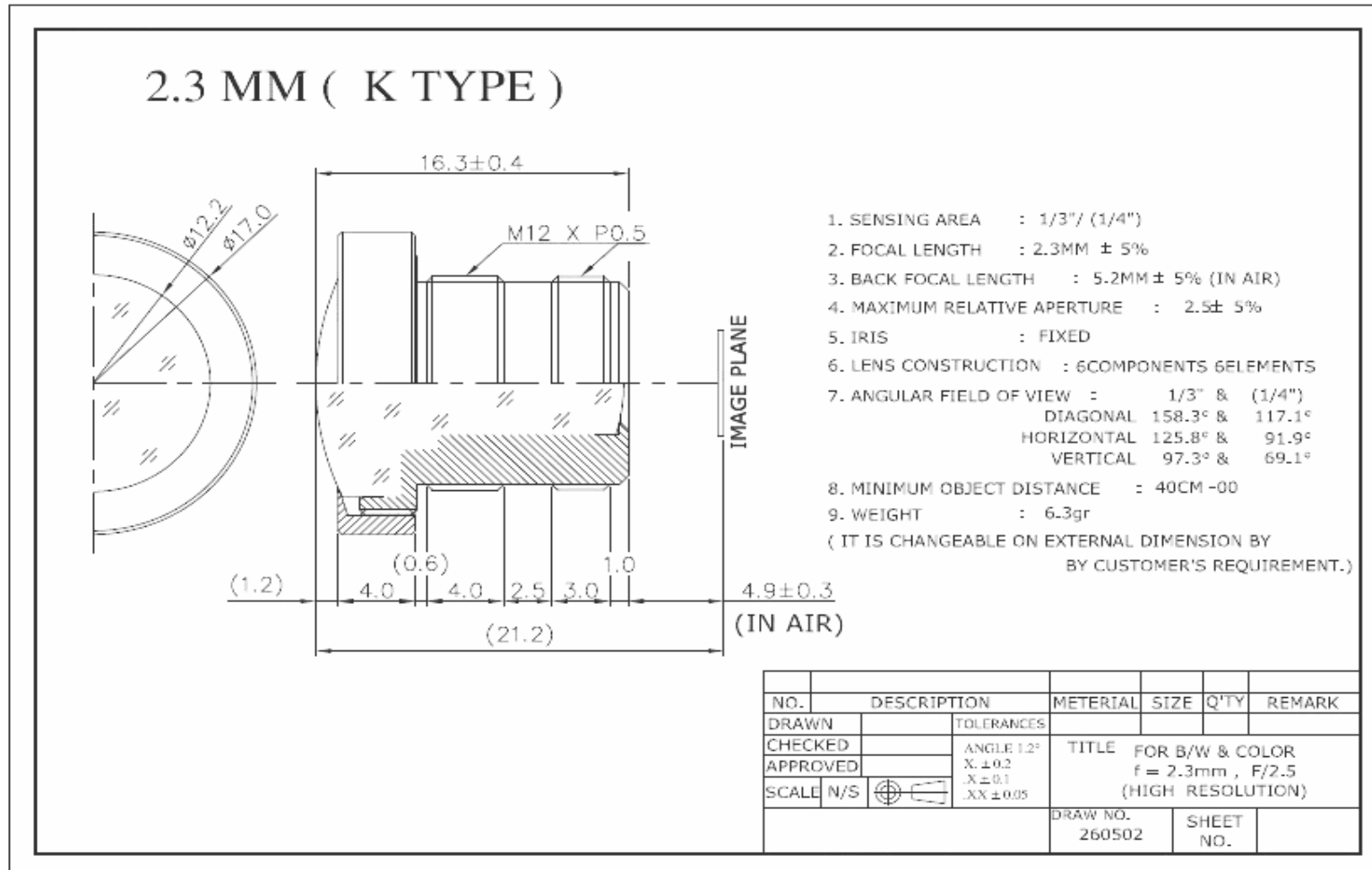
Website: [www.mars-cam.com](http://www.mars-cam.com)

Email: [sales@mars-cam.com](mailto:sales@mars-cam.com)

## V-4402.3-2.5-HR Lens

## 2.3mm F2.5 High Resolution CCTV Lens

Specification Data Sheet



# TECHNOLOGY REPORT

**Marshall Electronics, Inc.**

1910 East Maple Av, El Segundo, CA 90245 USA

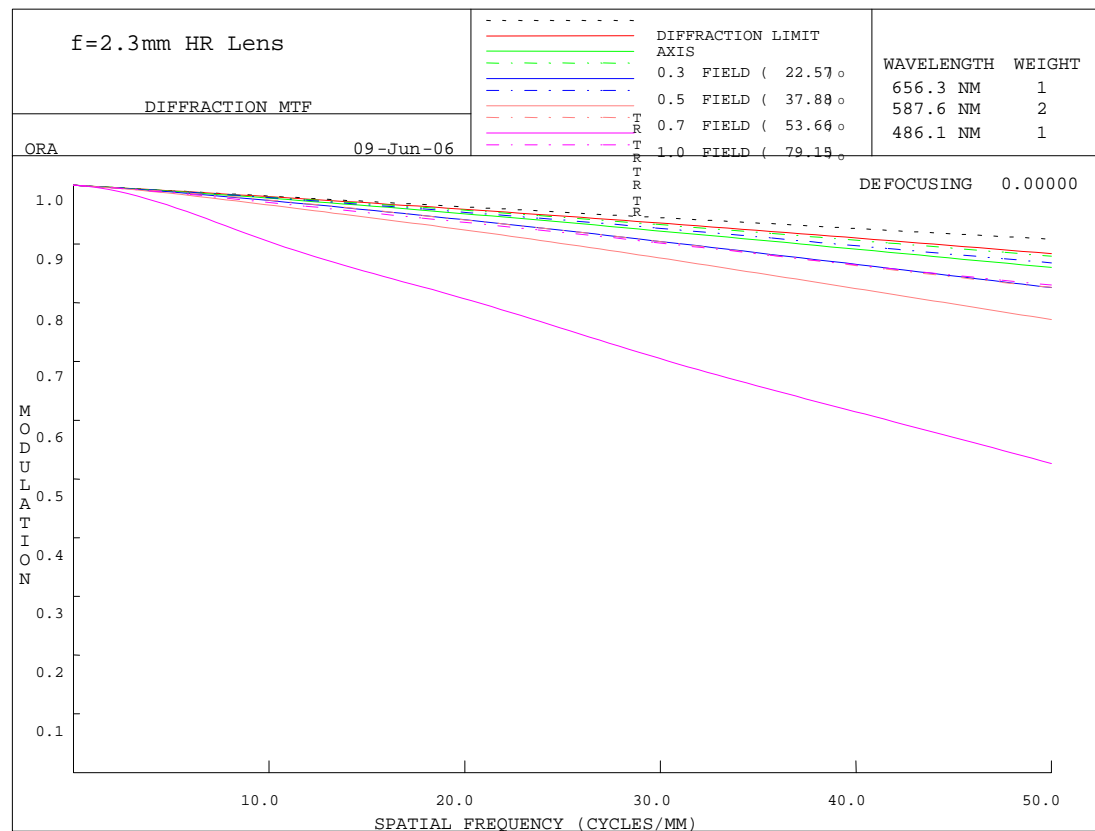
TEL : 310-333-0606

FAX : 310-333-0688

Website: [www.mars-cam.com](http://www.mars-cam.com)

Email: [sales@mars-cam.com](mailto:sales@mars-cam.com)

MTF (modulation transfer function)



# TECHNOLOGY REPORT

**Marshall Electronics, Inc.**

1910 East Maple Av, El Segundo, CA 90245 USA

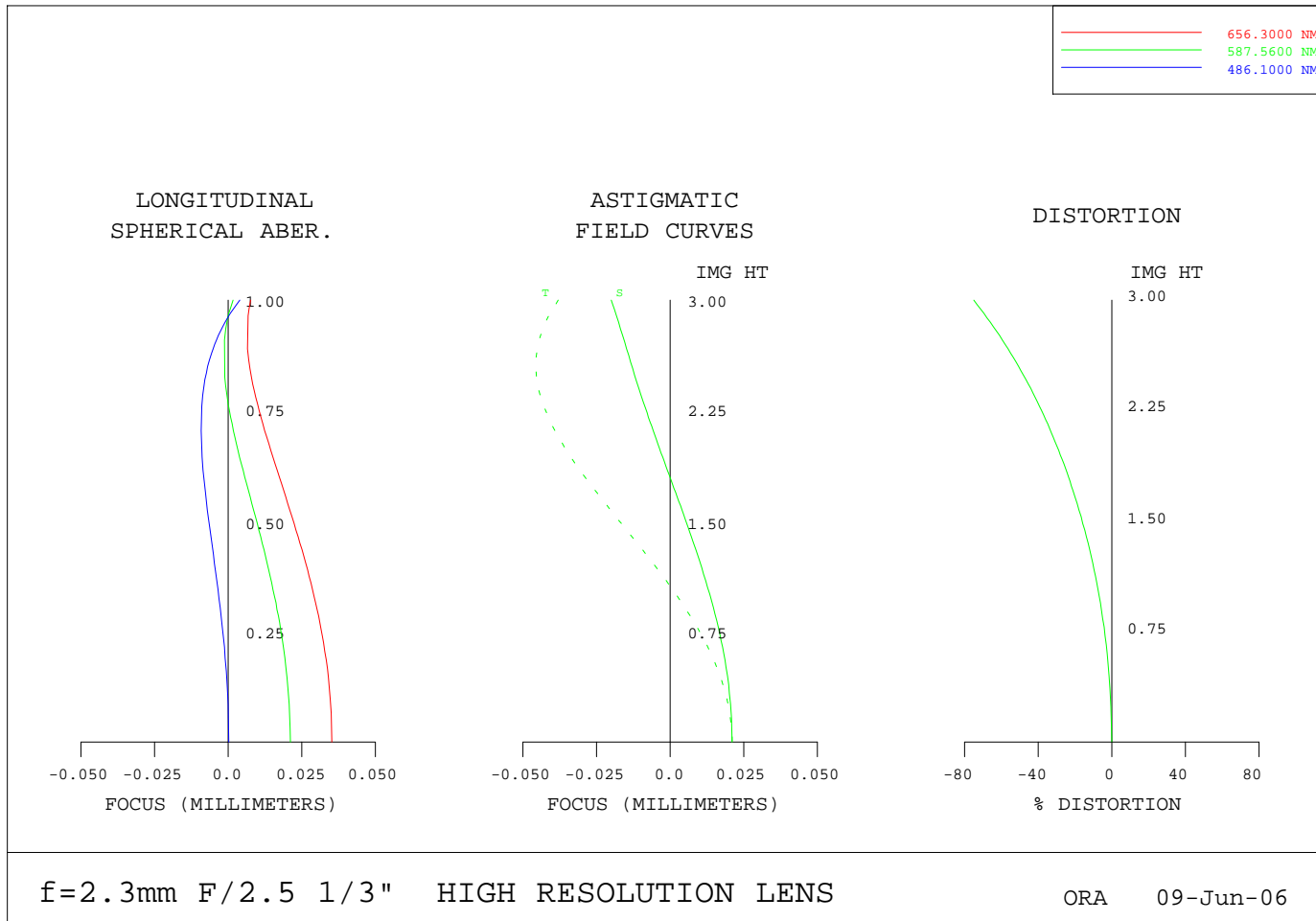
TEL : 310-333-0606

FAX : 310-333-0688

Website: [www.mars-cam.com](http://www.mars-cam.com)

Email: [sales@mars-cam.com](mailto:sales@mars-cam.com)

## Optical Distortion



# TECHNOLOGY REPORT

**Marshall Electronics, Inc.**

1910 East Maple Av, El Segundo, CA 90245 USA

TEL : 310-333-0606

FAX : 310-333-0688

Website: [www.mars-cam.com](http://www.mars-cam.com)

Email: [sales@mars-cam.com](mailto:sales@mars-cam.com)

## ROTATIONALLY SYMMETRIC FIELD ABERRATIONS

POSITION 1                      f=2.3mm F/2.5 1/3"    HIGH RESOLUTION LENS                      WAVELENGTH    587.6 NM

RELATIVE FIELD HEIGHT	IMG HT	X-FOCUS AT THE IMAGE SURFACE	Y-FOCUS	X-FOCUS (DISPLACED BY 0.000000)	Y-FOCUS	DISTORTION (PER CENT)
0.00	0.00	0.021087	0.021087	0.021087	0.021087	0.00000
0.10	0.30	0.020368	0.019246	0.020368	0.019246	-0.61478
0.20	0.60	0.018257	0.013885	0.018257	0.013885	-2.47050
0.30	0.90	0.014897	0.005466	0.014897	0.005466	-5.60232
0.40	1.20	0.010519	-0.005240	0.010519	-0.005240	-10.07223
0.50	1.50	0.005426	-0.017148	0.005426	-0.017148	-15.97510
0.60	1.80	-0.000025	-0.028862	-0.000025	-0.028862	-23.44914
0.70	2.10	-0.005460	-0.038684	-0.005460	-0.038684	-32.69417
0.80	2.40	-0.010555	-0.044666	-0.010555	-0.044666	-44.00526
0.90	2.70	-0.015197	-0.044825	-0.015197	-0.044825	-57.83984
1.00	3.00	-0.019932	-0.037948	-0.019932	-0.037948	-74.97073

Units of focus are MILLIMETERS